

## 3M™ Versaflo™ Powered Air Turbo TR-603E-ASB

To maintain protection levels, optimise the effective lifetime of the system and avoid the additional cost of replacement, it is extremely important to carry out regular checks and maintenance on Powered and Supplied Air Respirators.

The following information is intended as a guide on care and maintenance. For full information, please refer to the product user instructions.

### ▶ Battery

- Should be immediately charged after receipt of product

### ▶ Before Use

- Ensure Battery is fully charged
- Ensure Turbo is undamaged
- Ensure Breathing Tube is undamaged and both seals are in place on the bayonet end. Refer to the Turbo user instructions for information
- Ensure Full Face Mask is undamaged. Refer to the Full Face Mask user instructions for information
- Ensure Turbo is correctly secured to its belt
- Ensure Filter is correctly fitted
- Ensure Turbo is running in tight-fitting mode by inserting Breathing Tube before switching the Turbo on
- Perform airflow check – remove the Breathing Tube and insert the Airflow Indicator. Refer to the Turbo user instructions for information
- Perform alarm check. Refer to the Turbo user instructions for information
- Perform a negative pressure fit check on the Full Face Mask. Refer to the Turbo user instructions for information

### ▶ After Use

- (Refer to cleaning section of Turbo user instructions for detailed cleaning information)
- Personal shower decontamination should take place before switching off, removal and disassembly of the system
  - Turbo can also be immersed or put in a respirator washer for cleaning when fitted with cleaning and storage plugs

- Battery can be immersed for cleaning when fitted with cleaning cover
- If required, additional cleaning can be achieved by using a clean cloth dampened with a mild solution of water and liquid household soap
- Charge Battery (if required)
- Dispose of Filter
- Store other parts of the system in a dry, clean area/locker away from direct sunlight, high temperature and solvents

### ▶ Every Filter Change

- Inspect Filter and inner seal and replace if damaged
- Always properly install the Filter into the Turbo

### ▶ Monthly/Yearly

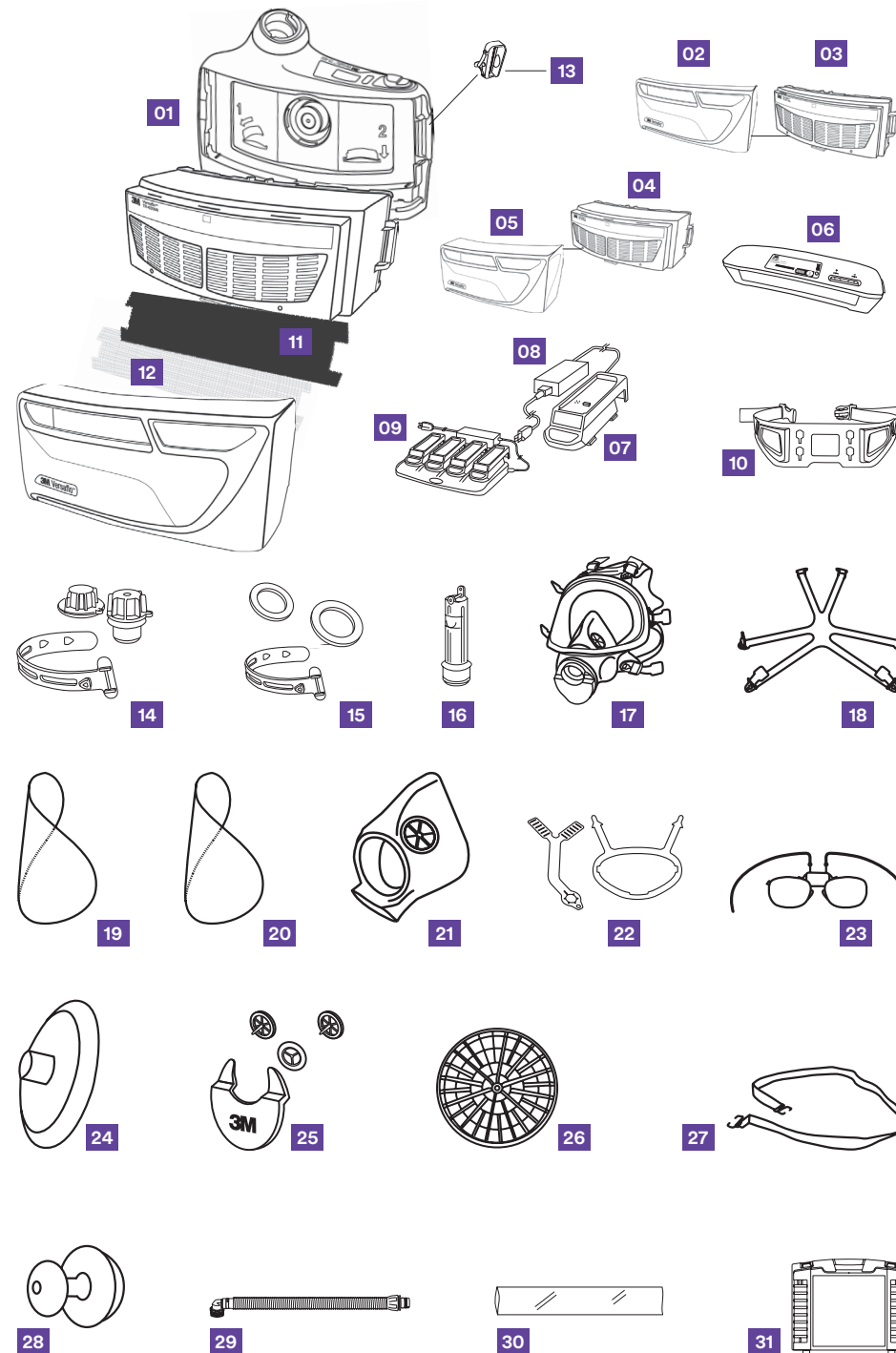
- Carry out all the 'Before Use' inspections and create a record of this monthly/yearly check for the Turbo/Full Face Mask

### ▶ Ordering Consumables, Repair Parts and Accessories

- To request a quote or place an order for these items, please contact your 3M Approved Distributor

### ▶ Further Information and Advice

- If you require additional guidance on the Care and Maintenance of your 3M Powered and Supplied Air Equipment, refer to product user instructions, or please contact the Helpline or your local 3M representative.



	Description	Part No.
01	3M™ Versaflo™ Powered Air Turbo TR-603E-ASB	TR-603E-ASB
02	3M™ Versaflo™ Filter Cover TR-6700FC	TR-6700FC
03	3M™ Versaflo™ Particulate Filter TR-6710E	TR-6710E
04	3M™ Versaflo™ A1P Filter TR-6110E	TR-6110E
05	3M™ Versaflo™ Filter Cover TR-6100FC	TR-6100FC
06	3M™ Versaflo™ High Capacity Battery TR-632	TR-632
07	3M™ Versaflo™ Battery Charger Cradle TR-640	TR-640
08	3M™ Versaflo™ Single Station Battery Charger Kit TR-641E	TR-641E
09	3M™ Versaflo™ 4-Station Battery Charger Kit TR-644E	TR-644E
10	3M™ Versaflo™ Easy Clean Belt TR-627	TR-627
11	3M™ Versaflo™ Pre-filter TR-6600	TR-6600
12	3M™ Versaflo™ Spark Arrestor TR-662	TR-662
13	3M™ Versaflo™ Filter Latch Assembly TR-651	TR-651
14	3M™ Versaflo™ Cleaning & Storage Kit TR-653	TR-653
15	3M™ Versaflo™ Cleaning & Storage Replacement Seals TR-654	TR-654
16	3M™ Versaflo™ Airflow Indicator TR-972	TR-972
17	3M™ Full Face Mask 7900PF	7900PF
18	3M™ Six-strap Harness 7893	7893
19	3M™ Lens 7927	7927
20	3M™ Lens Covers 7992	7992
21	3M™ Nose Cup Assembly 7991	7991
22	3M™ Breathing Tube Retainer RTN-01	RTN-01
23	3M™ Spectacle Kit 7925	7925
24	3M™ Exhalation Valve 7283	7283
25	3M™ Breathing Room Assembly Service Kit VLV-06	VLV-06
26	3M™ Speaking Diaphragm Kit 7895	7895
27	3M™ Neck Strap Assembly 7883	7883
28	3M™ Green Head Harness Buttons 7989	7989
29	3M™ Versaflo™ Breathing Tube BT-50	BT-50
30	3M™ Disposable Breathing Tube Cover BT-922	BT-922
31	3M™ Storage Case STC-01	STC-01

#### Note

3M does not accept responsibility or liability, direct or consequential, arising from reliance upon any information provided and the user should determine the suitability of the products for their intended use. Nothing in this statement will be deemed to exclude or restrict 3M's liability for death or personal injury arising from its negligence or fraudulent misrepresentation.

**Replace all damaged parts immediately to ensure correct levels of protection.**